

COSTA BLANCA MOUNTAIN WALKERS - WALK DESCRIPTION

Visit www.walksinspain.org for more walks descriptions in Spain

Walk description originally prepared by:-	Ralph Phipps and Philip Freakley	
Last Updated	5 th November 2016	
Title of Walk	Pauls circuit to Punta de l'Aigua	
Location of Start (include name of nearest village/town at start of description)	Pauls village cemetery above the village	
Key Statistics for walk - Distance in km	14	
Key Statistics for walk - Ascent in m	950	
Key Statistics for walk - Walking time and total completion time including any stops	4hr 6hr	
Key Statistics for walk - Grade (using CBMW system)	VS/B	
Grid reference of start point (if known)	Lat:- 40.922647, Long: 0.397622	
Directions to Start	Driving N from Tortosa on the C12 road beside the Ebro river turn L signed to Pauls and Xerta. Continue up the road to arrive at a large rusty metal town sign and here turn R. As you enter the village you pass through the Plaza Major and double back to the R steeply uphill on a narrow road with a "P" sign. This brings you face to face with the entrance to the cemetery and by turning L and dropping a few metres you find a large open parking area.	
Short walk description	A gentle beginning leads to a stiff climb up to the ridge and then an exploration of the ridge line follows before descending back to the village. Great views all day and fascinating terrain.	
Full Walk Description		Elapsed Walking Time/Distance so far
From the parking area walk back in front of the cemetery entrance and descend a few metres to a track with a finger-post which we follow L to Coves Roges.		
At a large metal finger-post a few metres ahead keep R towards Montsagre.		
At a track fork a few hundred metres further on keep uphill to the L at a post with a blue star and repeat this several hundred metres further on still following the blue stars.		320m, 4.5min
At a metal finger-post turn turn R downhill signed still towards Montsagre and then		

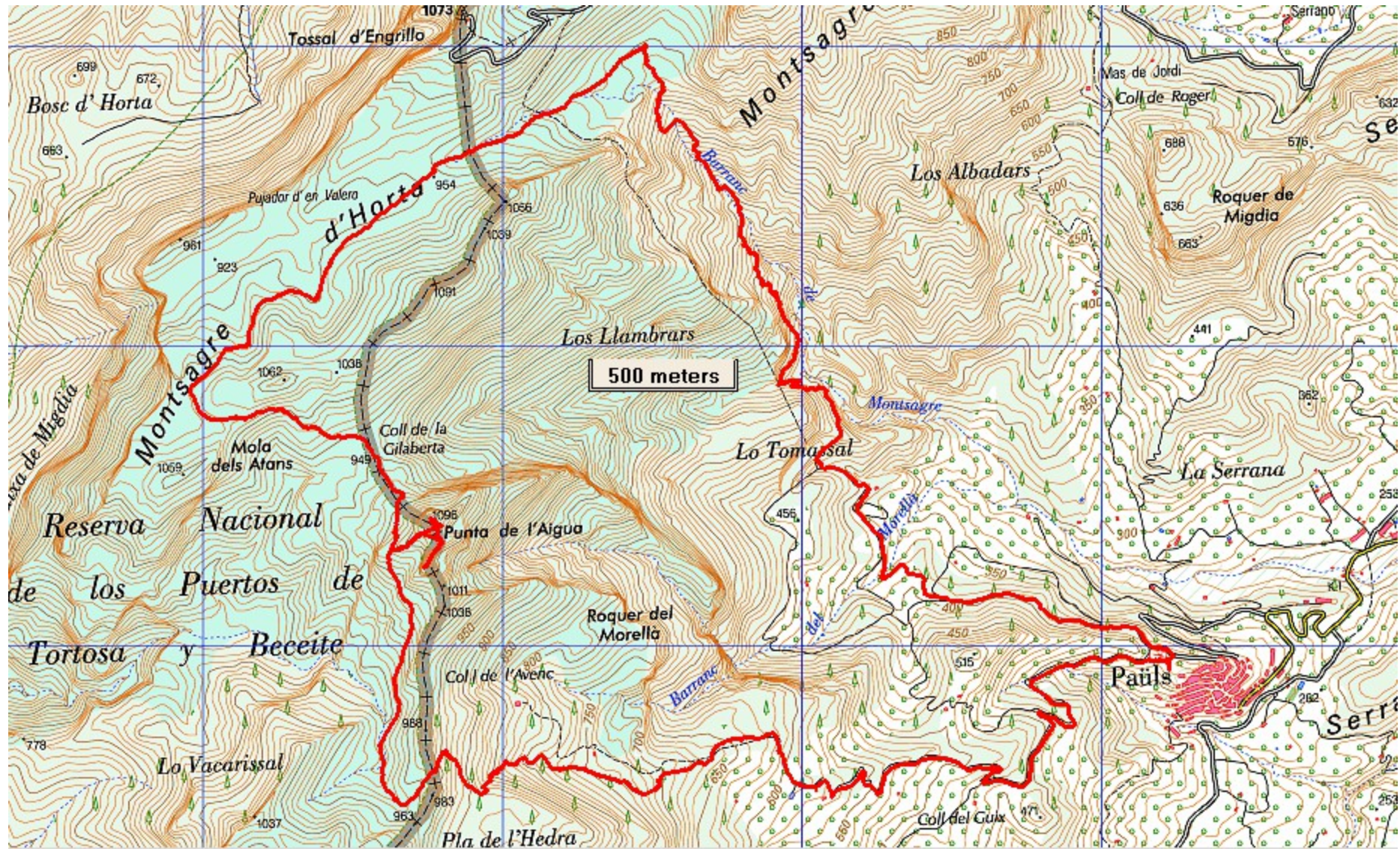
Remember that you use these walk guides at your own risk. Take precautions and if unsure – turn back!

COSTA BLANCA MOUNTAIN WALKERS - WALK DESCRIPTION

<p>Retrace your steps to the col and then turn L to descend across rough ground soon swinging L across the flank of the ridge with cairns and occasional Y/W markers.</p>	
<p>Enter woodland and reach a grassy barranco where we turn L and continue gently uphill on an indistinct path soon passing yet another metal finger-post at Vacarrisal and follow the line towards Pauls.</p>	8.9km, 2hr 43min
<p>A little way up this look L to see a clear grassy line aiming for a break in the ridge and we follow this and desert our line going directly ahead to a higher col.</p>	
<p>The break in the ridge may be the narrow Col de l'Avenc, although it is marked higher up the ridge on the map - and there is a pothole (Avenc in Catalan) a few metres to the R – take great care, it is a long way down!!</p>	9.3km, 2hr 51min
<p>Drop down the other side on a delightful zig-zag path in the woods to reach a secondary col where a path joins us from the R at a post with a red diamond on it and we turn L to continue our descent.</p>	9.7km, 2hr 58min
<p>Reach a finger-post at a T-jnc where we turn R towards Sant Roc.</p>	
<p>Emerge past a ruin with pastures on the LHS and views back up to the summit ridges.</p>	
<p>The path meanders above a track for a few metres and then drops to join it soon before a T-jnc where we turn L still downhill.</p>	11.2km, 3hr 26min
<p>Ignore a track jnc to the R and keep ahead.</p>	
<p>Reach tarmac at a T-jnc and turn L.</p>	12.2km, 3hr 41min
<p>Follow this down through many zig-zags with the village seeming never to draw nearer, but eventually after rising a few metres we crest the hill and look down on our parked cars near the cemetery.</p>	
<p>Walk Recommendations or restrictions</p>	<p>A head for heights is required to make the optional excursion to the summit of Punta de l'Aigua.</p>

Remember that you use these walk guides at your own risk. Take precautions and if unsure – turn back!

Route followed is outlined in Red



Remember that you use these walk guides at your own risk. Take precautions and if unsure – turn back!