

COSTA BLANCA MOUNTAIN WALKERS - WALK DESCRIPTION

Visit www.walksinSpain.org for more walks descriptions in Spain

Walk description originally prepared by:-	Ralph Phipps
Last Updated	19 th November 2016
Title of Walk	GR11 – Day 30 - Estaon to Tavascan
Location of Start (include name of nearest village/town at start of description)	Estaon. Village Refugio in centre of village.
Key Statistics for walk - Distance in km	13.5
Key Statistics for walk - Ascent in m	785
Key Statistics for walk - Walking time and total completion time including any stops	3.5hr 5.25hr
Key Statistics for walk - Grade (using CBMW system)	S/B
Grid reference of start point (if known)	Lat:- 42.587704, Long: 1.209868
Directions to Start	Take the C13 road N from Sort and then follow the L504 which leaves this at Llavorsi. This snakes its way N up towards the Pyrenean chain and you turn L towards Estaon at Ribera de Cardos. Continue to the outskirts by car and then walk into the refuge in the centre of the village.
Short walk description	A high level crossing from the remote village of Estaon to Tavascan – a more accessible village with etter facilities.
Full Walk Description	Elapsed Walking Time/Distance so far
<p style="color: red;"><u>Note – finger-post times are shown as a matter of record to indicate where you are – not to advise on achievable times!!</u></p> <p>From the refuge in the middle of the village walk down slightly S of E and slightly uphill onto a partially cobbled lane.</p> <p>Pass a ruin on the RHS with an explanatory board about the church and then join a traversing path L descending with the valley below on the RHS.</p> <p>Drop to cross a bridge and ascend on the other side to reach a track where you turn L.</p> <p>Follow the track over a bridge with a chain and closed gates and ignore a footpath on the RHS before the bridge.</p>	600m, 8min

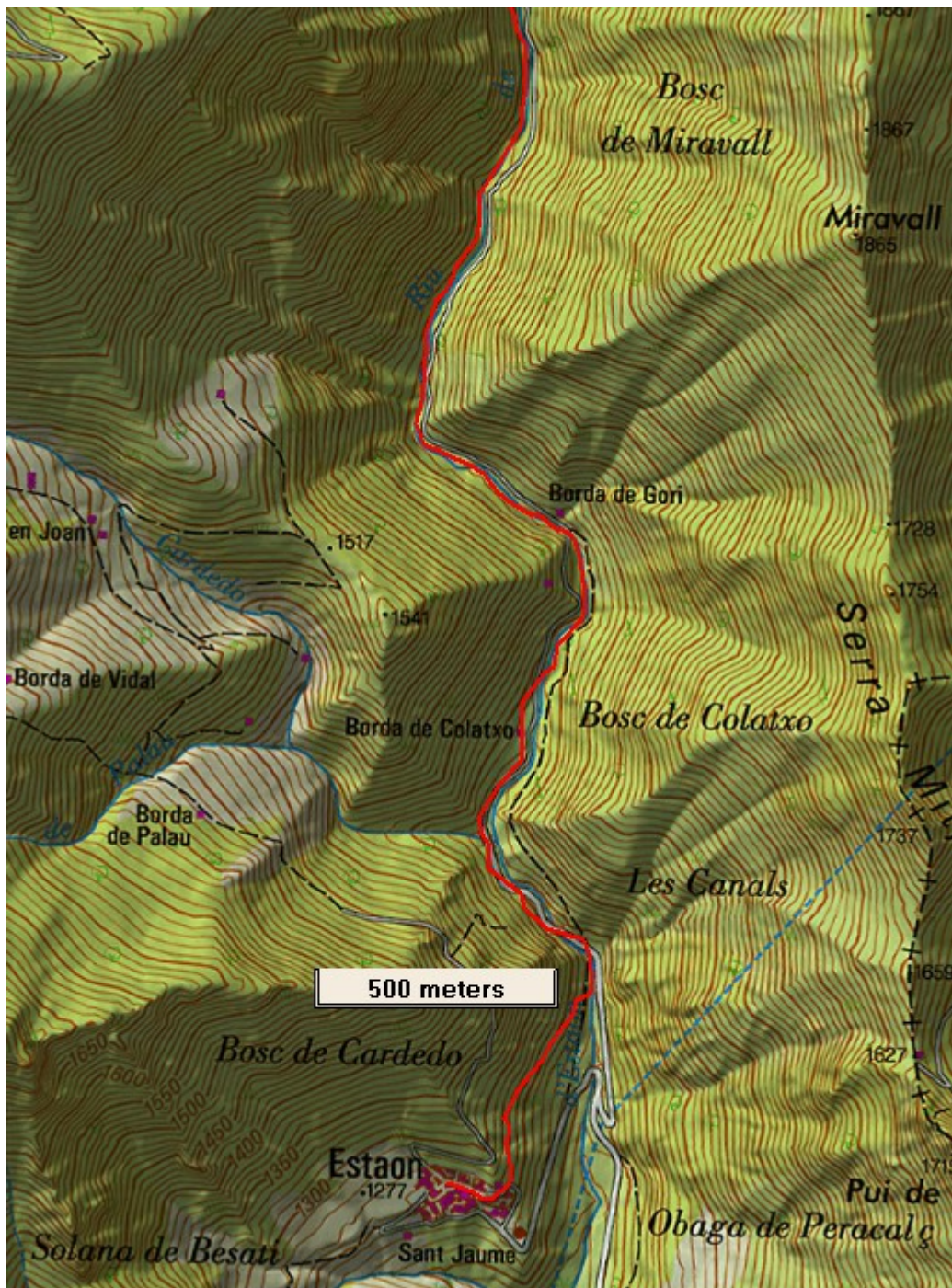
Remember that you use these walk guides at your own risk. Take precautions and if unsure – turn back!

COSTA BLANCA MOUNTAIN WALKERS - WALK DESCRIPTION

<p>At a finger-post take the footpath on the R signed to Coll de Jou.</p> <p>Re-join the track and turn R uphill.</p> <p>When the track ends continue on a footpath with a finger-post towards Bordes. (40 mins).</p> <p>Ignore a footpath on the LHS into pastures and reach a bridge on the LHS into the deserted village of Bordes de Nibros.</p> <p>Do not cross the bridge but continue ahead on a footpath to reach a zig-zag back to the R ascending. (Finger-post Collado de Jou – 55min)</p> <p>Pass one ruin and then at a second pass to the L and in front of this to reach a finger-post where you double back to the R.</p> <p>Zig-zag up to finally reach the col and go straight over and down.</p> <p>The path becomes very steep and highly eroded. Take care to zig-zag out to the R to follow the path down to an open area with trough and large water container and continue on R now on a track.</p> <p>At a junction turn R and this quickly swings back to the L.</p> <p>Follow this in many zig-zags ignoring minor side tracks.</p> <p>When you reach tarmac (at Lleret with a water point at the SW corner of the village) turn L at a large plaza with info board.....</p> <p>and at the next bend take the footpath up L (Tavascan – 1hr 30min)</p> <p>Shortly ignore a R turn to a waterfall (cascada).</p> <p>This is now a lovely balcony route with good views over and eventually you pass a rudimentary rock shelter on the LHS.</p> <p>Now the good path disappears and we descend on scree to reach a track.</p> <p>Follow this R and then L into the village.</p> <p>Pass between the playground and running water on the R and turn slightly uphill for a few metres and then level into the village to reach the church on the RHS.</p> <p>Keep ahead to a view point (mirador) and drop R to start descending a footpath (Tavascan – 18mins!!)</p> <p>Ignore a junction on the L to arrive in the village and cross an old bridge and descend to the main road.</p>	<p>1.3km, 16min</p> <p>3.8km, 46min</p> <p>5.6km, 1hr 7min</p> <p>5.9km, 1hr 12min</p> <p>8.7km, 1hr 44min</p> <p>11.8km, 2hr 22min</p> <p>12.1km, 2hr 25min</p>
<p>Walk Recommendations or restrictions</p>	<p>None</p>

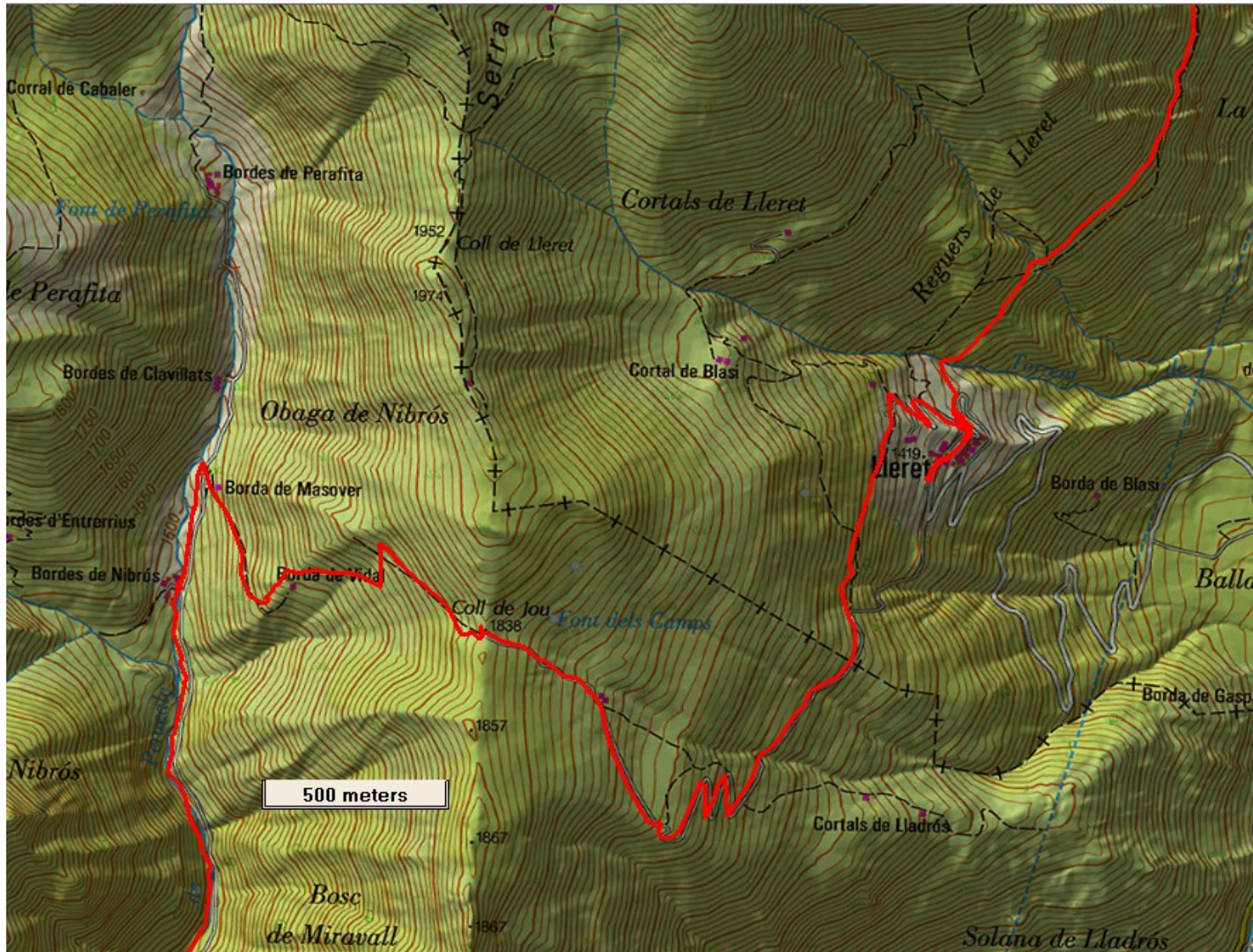
Remember that you use these walk guides at your own risk. Take precautions and if unsure – turn back!

Route followed is outlined in Red – Part 1



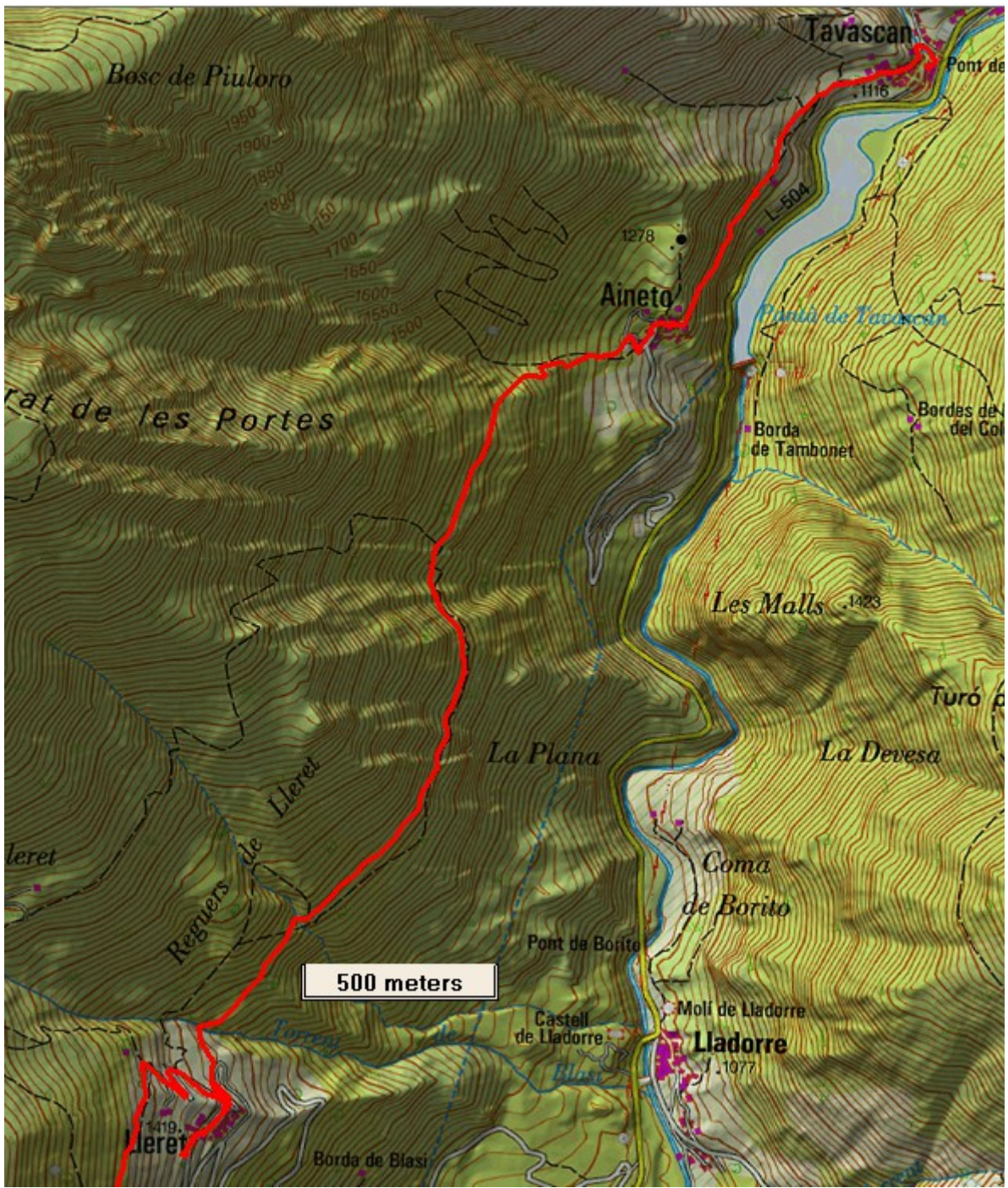
Remember that you use these walk guides at your own risk. Take precautions and if unsure – turn back!

Route followed is outlined in Red – Part 2



Remember that you use these walk guides at your own risk. Take precautions and if unsure – turn back!

Route followed is outlined in Red – Part 3



Remember that you use these walk guides at your own risk. Take precautions and if unsure – turn back!