

## **COSTA BLANCA MOUNTAIN WALKERS - WALK DESCRIPTION**

Visit [www.walksinspain.org](http://www.walksinspain.org) for more walks descriptions in Spain

<b>Walk description originally prepared by:-</b>	Jo Fletcher	
<b>Last Updated</b>	2 July 2017	
<b>Title of Walk</b>	El Cable to Fuente De on PR–PNPE 24	
<b>Location of Start (include name of nearest village/town at start of description)</b>	Fuente De main car park at the base of the cable car. To start the walk you need to take the cable car to the top station known as El Cable. The cost of the one way ticket in 2017 was Euro 11 although if you are a member of a Mountain Association there is a Euro 1 discount if you show your card. There is a ticket number call forward system in July and August when the wait to get the cable car can be a long one. Get there early.	
<b>Key Statistics for walk - Distance in km</b>	14km	
<b>Key Statistics for walk - Ascent in m</b>	80m ascent, descent is 880m	
<b>Key Statistics for walk - Walking time and total completion time including any stops</b>	3.33 hr 4.25 hr	
<b>Key Statistics for walk - Grade (using CBMW system)</b>	S/B	
<b>Grid reference of start point (if known)</b>	Lat: 43.14445, Long 4.81240	
<b>Directions to Start</b>	Leave Potes on the CV 185 and travel to the end of the road which is approximately 25km. As you approach the Cable car there is a large car park on your R. Park in the car park	
<b>Short walk description</b>	A circular walk that needs to be completed on a clear day. From the top of the cable car there is a slight climb in rugged terrain on a track before a descent on track through high meadows with dramatic views. You are bound to see many large birds on the walk.	
<b>Full Walk Description</b>		<b>Elapsed Walking Time/Distance so far</b>
From the cable car station at the top known as El Cable take the obvious track that leads you past the adventure sports hut which is on your L. You ascend gently for 1.1 km until you reach at track/path junction with sign post.		16mins, 1.1km
You are now at the highest point of the route having climbed about 80m from El Cable, to reach 1934m. Stay on the track and start to descend, spotting the occasional Y/W		

**Remember that you use these walk guides at your own risk. Take precautions and if unsure – turn back!**

## **COSTA BLANCA MOUNTAIN WALKERS - WALK DESCRIPTION**

marker. The views in front are spectacular with mountain meadows stretching out ahead of you. In summer this is pasture land for horses, cows and sheep. The track passes the mountain chalet 'Real'.	42min, 3km
Ahead you can see the Hotel/Refugio De Aliva. There is a bar which also serves food.	56min, 4km
Continue down the track to your R. which is used by vehicles to resupply the Refugio. Keep heading down until you reach a T track junction. Turn R.	1hr22min/5.9km
The track continues to descend before eventually passing a couple of fonts and coming to a narrow pass between rocks with a cattle grid and gate. Continue across the cattle grid and then very shortly you will see a small wooded bridge on your R with a sign pointing R to PR24. Turn R onto a path.	1hr50min 7.9km
The path shortly descends steeply down to the treeline and eventually joins a forest track with the occasional Y/W marker. The track becomes a path and remains in the trees the majority of the time as you descend but have the occasional stiff climb to get around the spurs of the hills. Once you have joined a better track and have reached a less wooded area, you will find the track blocked with a fence. Turn R onto a path.	2hr50/11.7km
The path eventually re-joins a track that is clearly used for cattle. Bear right onto the track.	3hrs/12.4km
Follow the track until it breaks out into an open area which you will see is just below the car park. Make your way through the gates to the car park.	3hr30min/14km
<small>Spanish maps included within these descriptions are provided courtesy of the Spanish IGN and remain © Instituto Geográfico Nacional</small>	

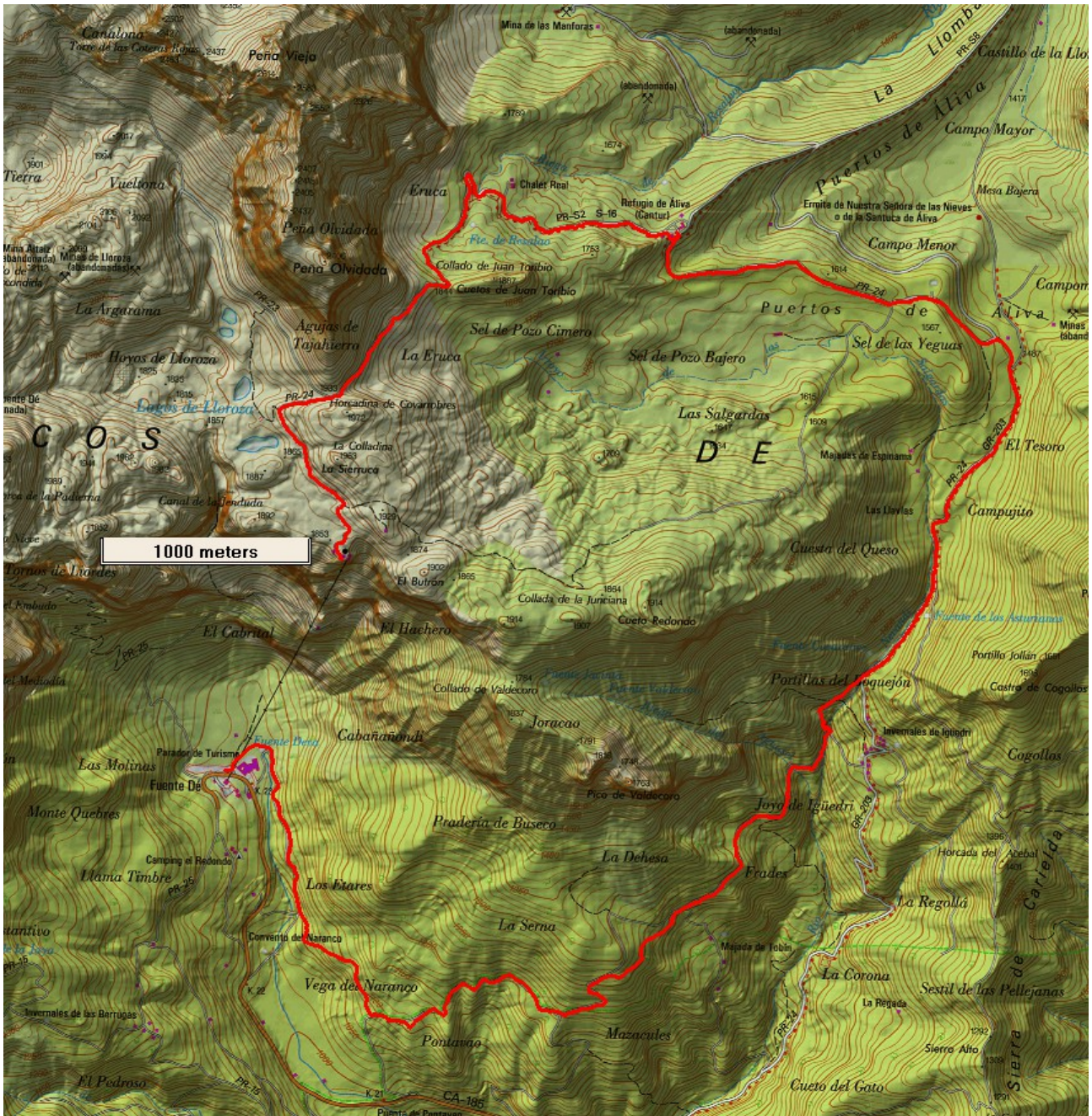
### **Walk Recommendations or restrictions**

This can be a tough walk in warm weather and is tough going if you find long downhill sections a challenge.

see map below.....

**Remember that you use these walk guides at your own risk. Take precautions and if unsure – turn back!**

**Route followed is outlined in Red**



**Remember that you use these walk guides at your own risk. Take precautions and if unsure – turn back!**